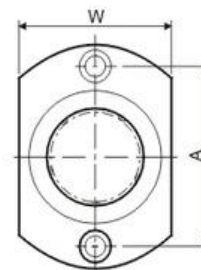
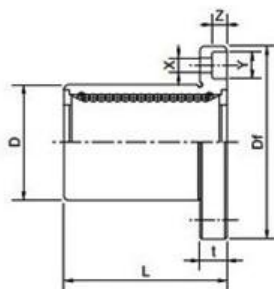




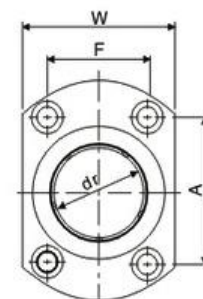
LMH6UU - LMH13UU



LMH16UU - LMH30UU



LMH6UU - LMH13UU



LMH16UU - LMH30UU

Model Number	Ball Circuit	Weight (g)	Dimensions(mm)						Flange(mm)							Squares(μm)	Basic Load Rating		
			dr	Tolerance (μm)	D	Tolerance (μm)	L	Tolerance (μm)	Df	W	t	A	F	X	Y		Z	Dynami c (CN)	Static (CoN)
LMH6UU	4	21	6	0-9	12	0-11	19	0-200	28	18	5	20		3.5	6	3.1	12	206	265
LMH8UU	4	33	8		15		24		32	21	5	24		3.5	6	3.1	12	274	392
LMH10UU	4	64	10		19		29		40	25	6	29		4.5	7.5	4.1	12	372	549
LMH12UU	4	68	12		21	0-13	30		42	27	6	32		4.5	7.5	4.1	12	510	784
LMH13UU	4	81	13		23		32		43	29	6	33		4.5	7.5	4.1	12	510	784
LMH16UU	5	112	16		28		37		48	34	6	31	22	4.5	7.5	4.1	12	774	1180
LMH20UU	5	167	20	32	0-10	42	54	38	8	36	24	5.5	9	5.1	15	882	1370		
LMH25UU	6	325	25	40		0-16	59	62	46	8	40	32	5.5	9	5.1	15	980	1570	
LMH30UU	6	388	30	45			0-300	64	74	51	10	49	35	6.6	11	6.1	15	1570	2740

